



AJ-GD TYPE VESSEL FENDER

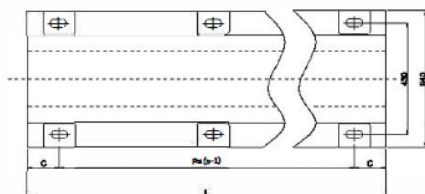
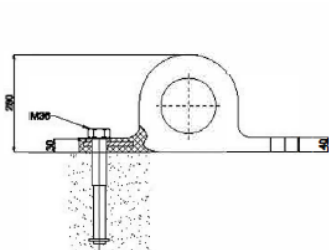
AJ GD type vessel fenders are an improved version of AJ-D type and typically used for protection the side of boats and vessels, such tug boats, pilot boats, working boats etc.. The fenders have better Energy / Reaction force ratio, which can absorb the impacting energy smoothly when vessel berth to port. The fenders can support vessel berthing very well.

AJ GD type vessel fender has various design and types include GD and GD B. They are suitable for different applications and installations.

They are very robust, durable, low maintenance and easy installation.

AJ-GD 280x540 Vessel Fender Dimension

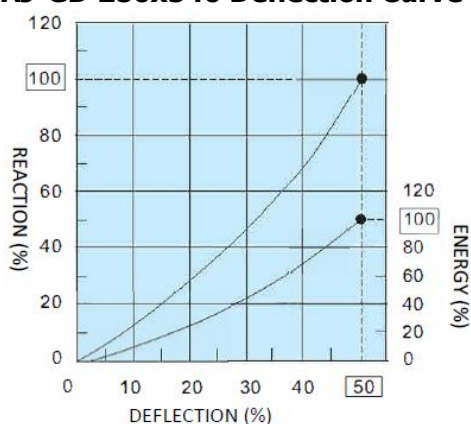
TYPE	C	P	L	n	WEIGHT(kg)
AJ-GD280*540*1000	150	700	1000	2	124
AJ-GD280*540*1500	150	600	1500	3	182
AJ-GD280*540*2000	145	570	2000	4	255
AJ-GD280*540*2500	150	550	2500	5	328
AJ-GD280*540*3000	150	540	3000	6	402



AJ-GD 280x540 Vessel Fender Reaction/Energy Performance

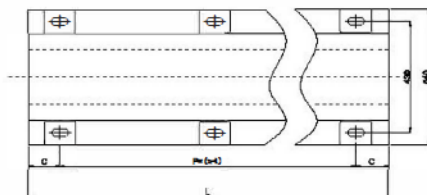
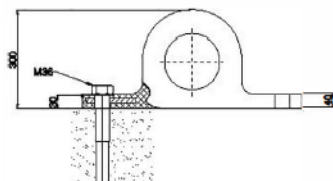
Reaction R: KN Energy E: KNm	Design Deflection 50%	
	R:KN	E:KNm
AJ-GD280*540*1000	375	14
AJ-GD280*540*1500	565	21
AJ-GD280*540*2000	750	28
AJ-GD280*540*2500	940	35
AJ-GD280*540*3000	1130	42

AJ-GD 280x540 Deflection Curve

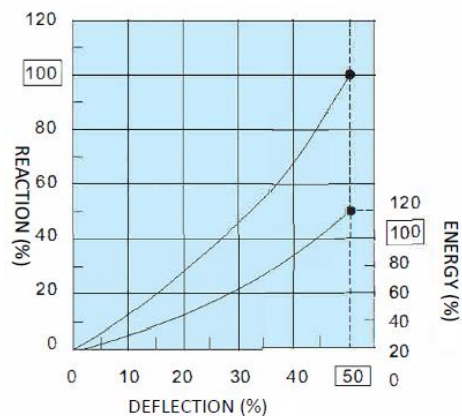


**AJ-GD 300x540 Vessel Fender Dimension**

TYPE	C	P	L	n	WEIGHT(kg)
AJ-GD300*540*1000	150	700	1000	2	130
AJ-GD300*540*1500	150	600	1500	3	197
AJ-GD300*540*2000	145	570	2000	4	270
AJ-GD300*540*2500	150	550	2500	5	340
AJ-GD300*540*3000	150	540	3000	6	420

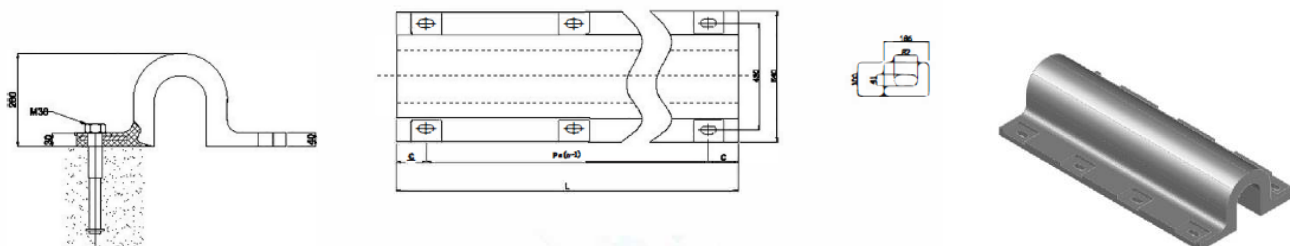
**AJ-GD 300x540 Vessel Fender Reaction/Energy Performance**

Reaction R: KN Energy E: KNm	Design Deflection 50%	
	R:KN	E:KNm
AJ-GD300*540*1000	375	17
AJ-GD300*540*1500	605	24
AJ-GD300*540*2000	780	33
AJ-GD300*540*2500	974	39
AJ-GD300*540*3000	1166	47

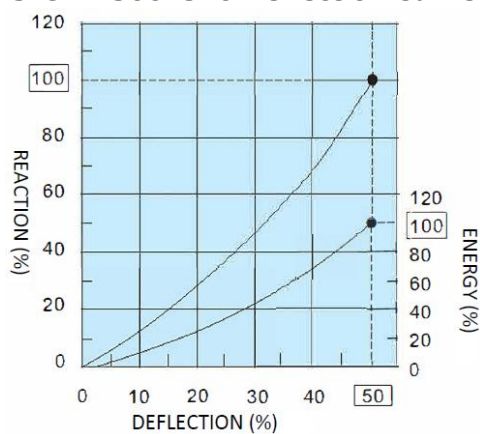
AJ-GD 300x540 Deflection Curve

**AJ-GD B300x540 Vessel Fender Dimension**

TYPE	C	P	L	n	WEIGHT(kg)
AJ-GD-B300*540*1000	150	700	1000	2	102
AJ-GD-B300*540*1500	150	600	1500	3	156
AJ-GD-B300*540*2000	145	570	2000	4	210
AJ-GD-B300*540*2500	150	550	2500	5	270
AJ-GD-B300*540*3000	150	540	3000	6	330

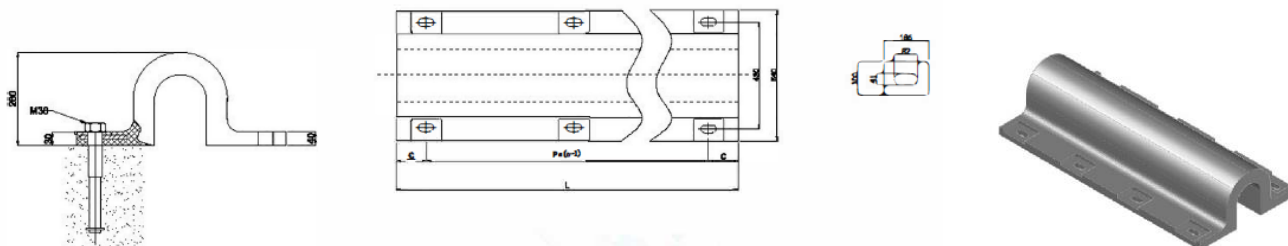
**AJ-GD B300x540 Vessel Fender Reaction/Energy Performance**

Reaction R: KN Energy E: KNm	Design Deflection 50%	
	R:KN	E:KNm
AJ-GD-B300*540*1000	450	18
AJ-GD-B300*540*1500	696	27
AJ-GD-B300*540*2000	898	38
AJ-GD-B300*540*2500	1120	45
AJ-GD-B300*540*3000	1341	54

AJ-GD B300x540 Deflection Curve

**AJ-GD B300x600 Vessel Fender Dimension**

TYPE	C	P	L	n	WEIGHT(kg)
AJ-GD-B300*600*1000	150	700	1000	2	144
AJ-GD-B300*600*1500	150	600	1500	3	202
AJ-GD-B300*600*2000	145	570	2000	4	290
AJ-GD-B300*600*2500	150	550	2500	5	370
AJ-GD-B300*600*3000	150	540	3000	6	450

**AJ-GD B300x600 Vessel Fender Reaction/Energy Performance**

Reaction R: KN Energy E: KNm	Design Deflection 50%	
	R:KN	E:KNm
AJ-GD-B300*600*1000	495	20
AJ-GD-B300*600*1500	765	30
AJ-GD-B300*600*2000	989	39
AJ-GD-B300*600*2500	1237	49
AJ-GD-B300*600*3000	1484	59

AJ-GD B300x600 Deflection Curve