



AJ-ME ARCH FENDER

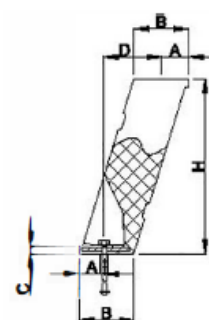
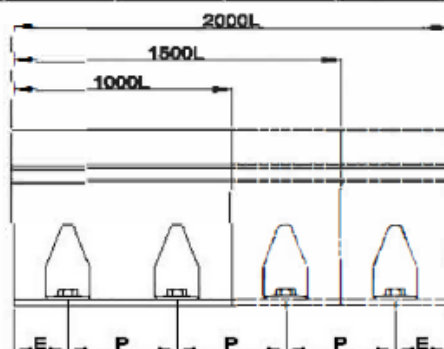
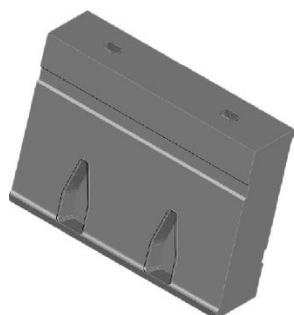
AJ-ME arch fenders were introduced to improve upon the performance of cylindrical fenders and AJ-DA arch fenders. It has a better Energy / Reaction force ratio and are recommended for all types of applications. Surface can be designed with PE anti-force panel to protect the fender. It comprises of two parts, which can be transported flexibly and assembled at site.

Very robust, durable and require low maintenance, provide high shear resistance in the longitudinal direction. Very easy to install both vertically and horizontally.

Particularly useful for vessels with high allowable hull pressures and for locations where mounting space is limited, most suitable for Multi-Purpose-Terminals.

AJ-ME Dimension

TYPE	H	A	B	C	D	Md	E	P	WEIGHT (KG)
AJ-ME300	300	47	94	15	94	M20	250	500	39
AJ-ME400	400	63	125	17	124	M24	250	500	70
AJ-ME500	500	87	158	20	142	M30	250	500	110
AJ-ME550	550	87	172	20	170	M30	250	500	132
AJ-ME600	600	87	188	20	199	M30	250	500	156
AJ-ME750	750	118	235	26	230	M36	250	500	230
AJ-ME800	800	129	250	26	240	M36	250	500	283
AJ-ME1000	1000	162	322	31	310	M42	250	500	430
AJ-ME1250	1250	202	401	36	388	M48	250	500	655
AJ-ME1450	1450	228	454	41	454	M48	250	500	835
AJ-ME1600	1600	257	500	55	480	M56	250	500	1005



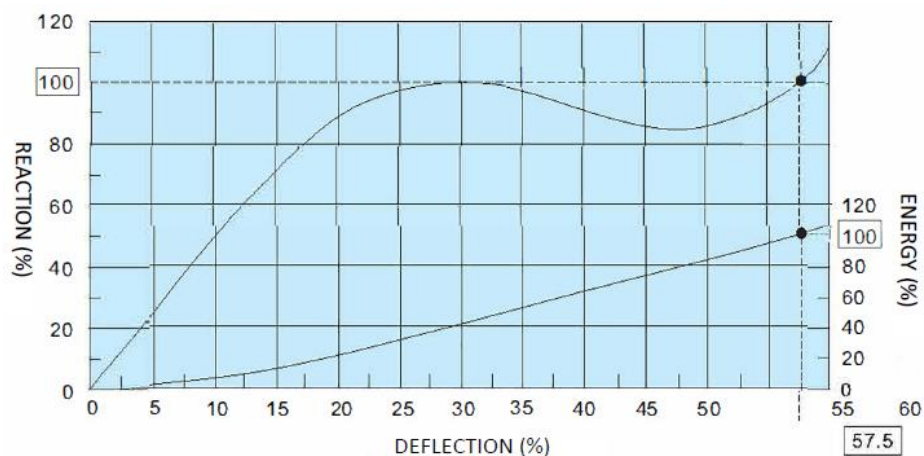
▽H	L▷	600	900	1000	1200	1500	2000	MAX
AJ-ME300		○	○	●	○	●	●	2000
AJ-ME400-ME750			○	●	○	●	●	2000
AJ-ME800-ME1250			○	●	○	●	●	2000
AJ-ME1450-ME1600				●	●	●	●	2000



AJ-ME Reaction/Energy Performance

Reaction R:KN Energy E:KNm	Design Deflection 57.5%%			
	RO Grade		RH Grade	
	R:KN	E:KNm	R:KN	E:KNm
AJ-ME300	110	15	161	22
AJ-ME400	150	27	214	39
AJ-ME500	187	43	267	61
AJ-ME550	206	52	294	75
AJ-ME600	224	62	320	89
AJ-ME750	282	96	402	137
AJ-ME800	299	110	428	157
AJ-ME1000	374	172	534	245
AJ-ME1250	467	268	666	383
AJ-ME1450	543	361	775	516
AJ-ME1600	599	440	855	628

Deflection Curve



Typical Installations

