



CO2 CYLINDER VALVE K85-50

Part No.: WR511011

The K85-50 CO2 cylinder valve is widely used by high pressure CO2 fire fighting system manufacturers. The valve can be either pneumatic operated or manual operated by a lever.

Technical specification

Valve material	Brass
Bursting pressure	190bar
Inlet thread	W28.8 DIN477
Outlet thread	W21.8 x 1/14"
Siphon tube connection	M16 x 1
Pneumatic connection	G 3/8"

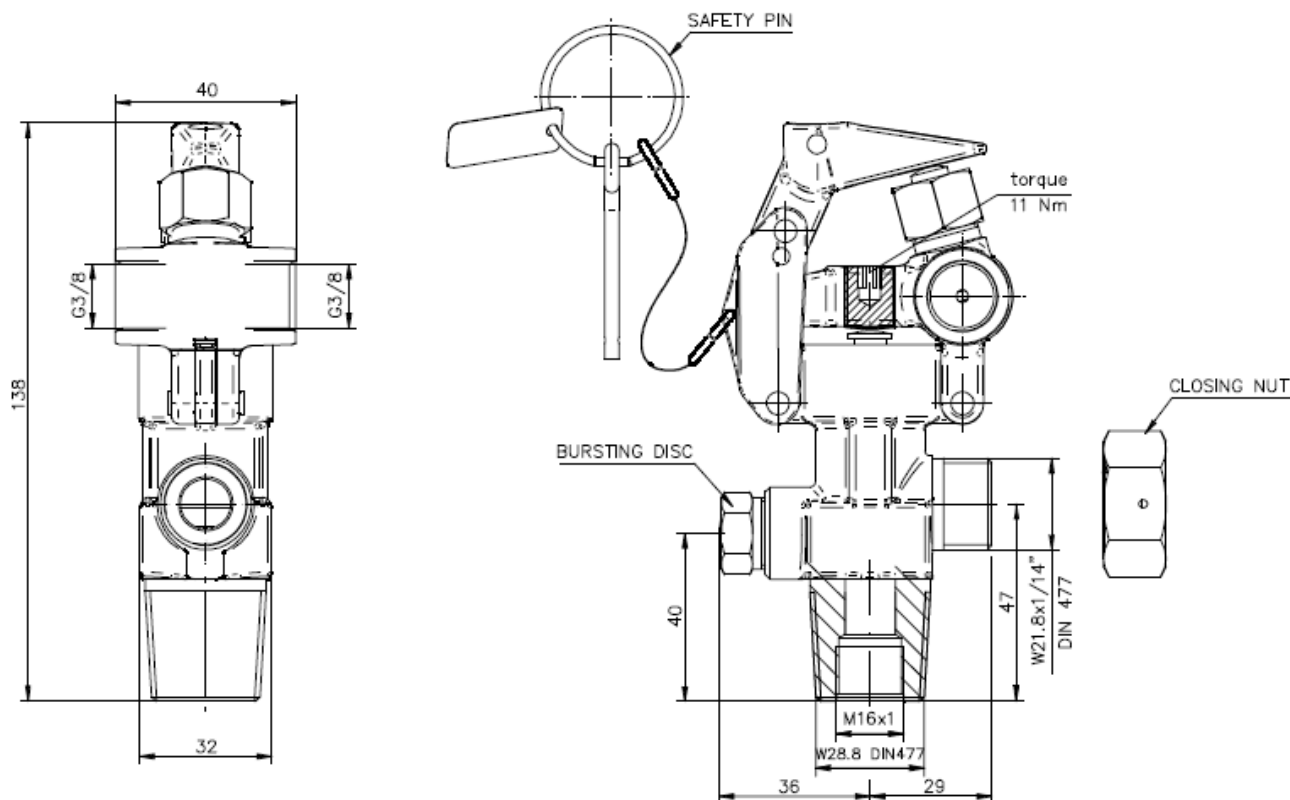
Approval

TPED / CPD





Dimensions



CLOSING NUT TO BE ALWAYS TIGHT TO THE VALVE OUTLET DURING TRANSPORTATION AND STORING UNTIL CO2 CYLINDER IS READY TO MOUNT INTO SYSTEM

SAFETY PIN TO BE ALWAYS SECURED AFTER CYLINDER FILING, THE SAFETY PIN SHALL BE REMOVED WHEN THE SYSTEM COME TO OPERATIVE