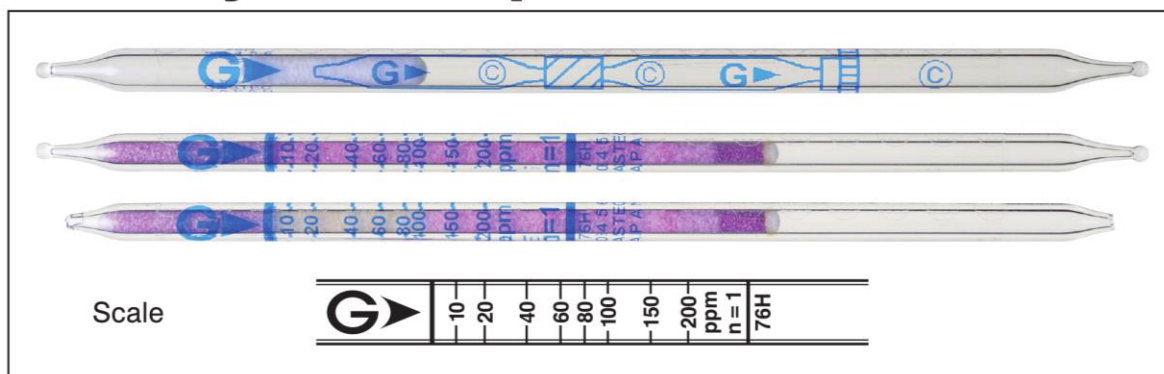




## Tetrahydrothiophene C<sub>4</sub>H<sub>8</sub>S

Part No.:76H

# Tetrahydrothiophene C<sub>4</sub>H<sub>8</sub>S No.76H

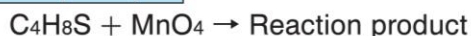


### Performance

When used, these tubes are to be connected. See page 2-3.

Measuring range	10 to 200 ppm
Number of pump strokes	1 (100 mL)
Correction factor	1
Sampling time	1 min
Detecting limit :	2 ppm (1 pump stroke)
Colour change :	Pink → Pale yellow
Operating conditions :	Temperature 0 to 40 °C (32 to 104 °F) correction used Relative humidity 0 to 90 % correction not used
Relative standard deviation :	10 % (for 10 to 60 ppm), 5 % (60 to 200 ppm)
Tube quantity and number of tests per box :	10 tubes for 5 tests
Shelf life :	24 months

### Reaction principle



### Possible coexisting substances and their interferences

Substance	Concentration	Interference	Changes colour by itself to
Hydrogen sulphide	≤ 300 ppm	No	} Pale pink (whole layer)
Ethyl mercaptan	≤ 3 ppm	No	
Ethylene	≤ 5000 ppm	No	
Propylene	≤ 2000 ppm	No	
Methanol	≤ 2000 ppm	No	

### Calibration gas generation

Diffusion tube method