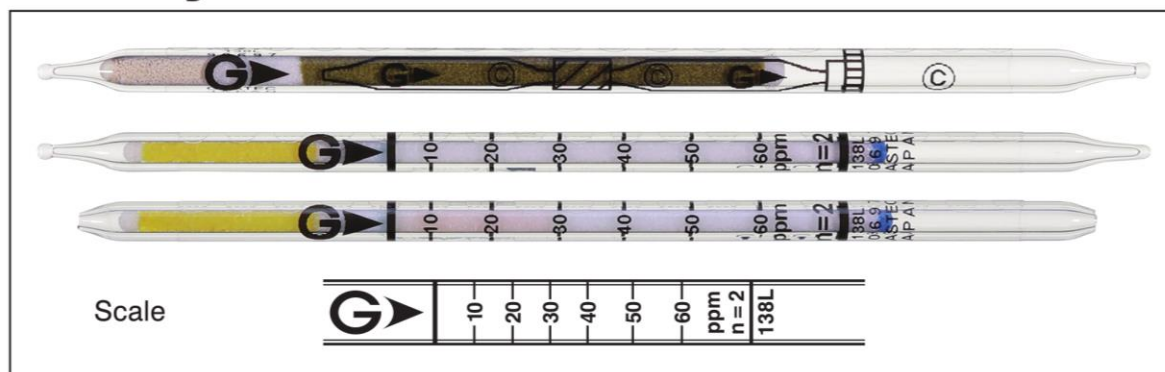




Methylene Chloride CH₂Cl₂

Part No.: 138L

Methylene Chloride CH₂Cl₂ No.138L



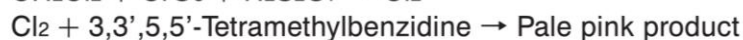
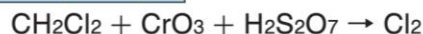
Performance

When used, these tubes are to be connected. See page 2-3.

Measuring range	4 to 10 ppm	10 to 60 ppm	60 to 150 ppm
Number of pump strokes	4 (400 mL)	2 (200 mL)	1 (100 mL)
Correction factor	0.4	1	2.5
Sampling time	12 min	6 min	3 min

Detecting limit :	3 ppm (4 pump strokes)
Colour change :	White → Pale pink
Operating conditions :	Temperature 0 to 40 °C (32 to 104 °F) correction used Relative humidity 0 to 90 % correction not used
Relative standard deviation :	15 % (for 10 to 20 ppm), 10 % (for 20 to 60 ppm)
Tube quantity and number of tests per box :	10 tubes for 5 tests
Shelf life :	24 months

Reaction principle



Possible coexisting substances and their interferences

Substance	Concentration	Interference	Changes colour by itself to
Chlorine, Bromine, Iodine		+	Pale pink
Unsaturated halogenated HCs	≥ 6 ppm	+	Pale pink
Saturated halogenated HCs	≥ 3 ppm	+	Pale pink

Calibration gas generation

Diffusion tube method