

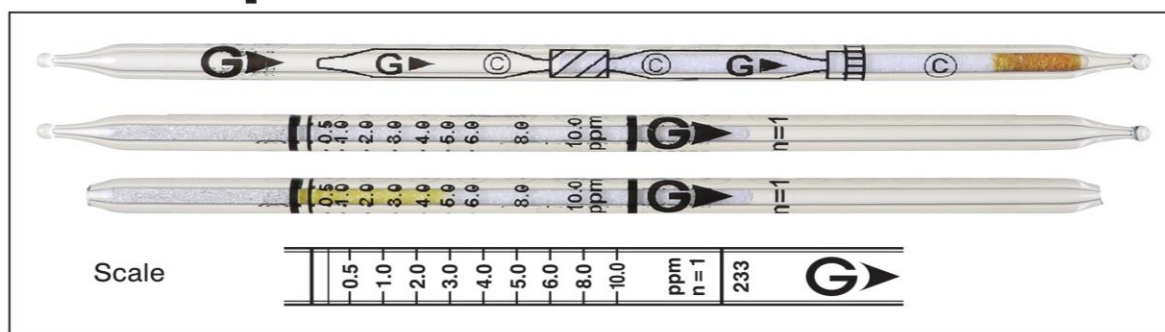


Chloropicrin CCl₃NO₂

Part No.: 233

Chloropicrin CCl₃NO₂

No.233



When used, these tubes are to be connected. See page 2-3.

Performance The minimum scale value (0.1ppm) is not printed on the tube, but only the scale line is printed.

Measuring range	0.045 to 0.1 ppm	(0.1) to 10 ppm	10 to 22 ppm
Number of pump strokes	2 (200 mL)	1 (100 mL)	1/2 (50 mL)
Correction factor	0.45	1	2.2
Sampling time	4 min	2 min	1 min

Detecting limit : 0.03 ppm (2 pump strokes)

Colour change : White → Yellow

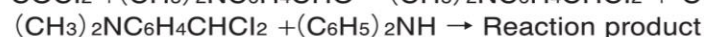
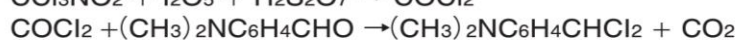
Operating conditions : Temperature 0 to 40 °C (32 to 104 °F) correction not used
Relative humidity 0 to 90 % correction not used

Relative standard deviation : 10 % (for 0.1 to 3.0 ppm), 5 % (for 3.0 to 10.0 ppm)

Tube quantity and number of tests per box : 10 tubes for 5 tests

Shelf life : 12 months

Reaction principle



Possible coexisting substances and their interferences

Substance	Concentration	Interference	Changes colour by itself to
Ammonia		No	No
Carbon dioxide		No	
Carbon monoxide	≥ 10 ppm	—	
Ethylene oxide		No	
Formaldehyde		No	
Hydrogen cyanide		No	Yellow (≥ 2 ppm)
Methyl bromide	≥ 2 ppm	+	
Phosphine		No	No
Sulphuryl fluoride		No	
1,2-Dichloroethane		No	
Benzene		No	
Toluene		No	

Calibration gas generation

Diffusion tube method